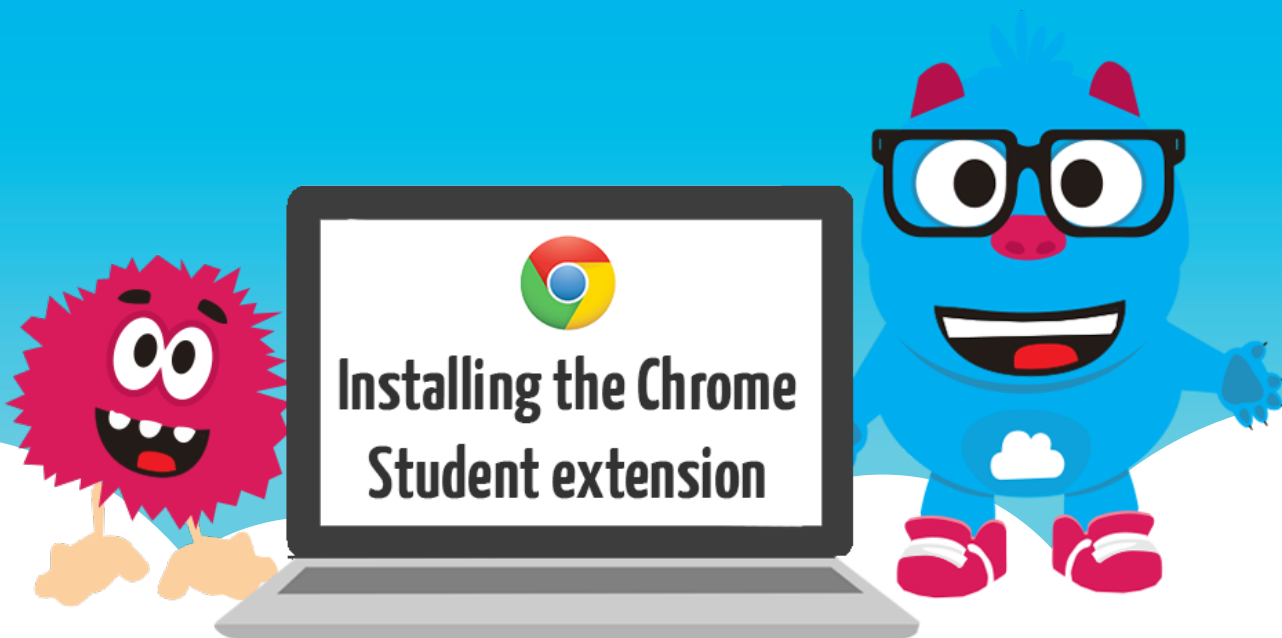




classroom  
.cloud

powered by

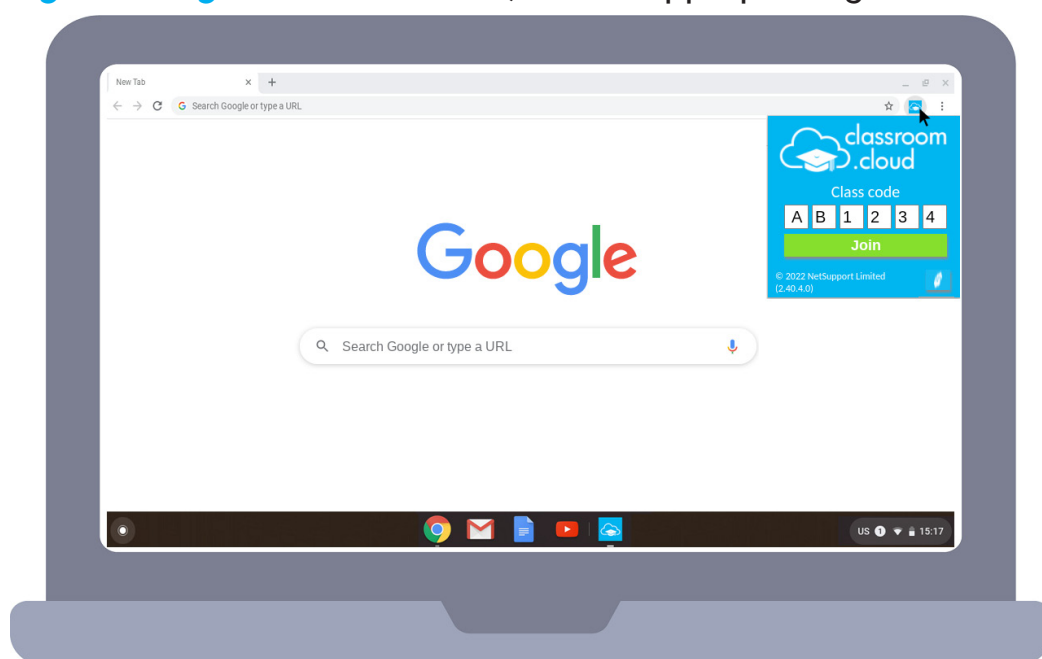
NetSupport



## Welcome to this **classroom.cloud** installation guide

In this guide we will explain how to download the **classroom.cloud** **Student extension** from the Chrome Web Store and configure the settings needed to enroll devices in to your **classroom.cloud** organisational environment.

**Please note:** If you centrally manage your Chrome extensions using the **Google Admin Console**, you should refer to the supporting document, [Managing the Student extension using the Google Admin Console](#), for the appropriate guidance.



Before teachers can connect, from the **classroom.cloud** **Teacher Console**, to the students chromebooks, the **classroom.cloud** **Student extension** must be active in the Chrome browser of each device.

The devices also need to be assigned to a **classroom.cloud** **Device Group** located within the appropriate **Site** in your organisational structure.

For the purposes of this document, it is assumed that your **classroom.cloud** **Admin** has already prepared the environment within which the Chromebooks will be enrolled.

However, if help is needed with this, please refer to the **classroom.cloud** [Administrator's Getting Started Guide](#).



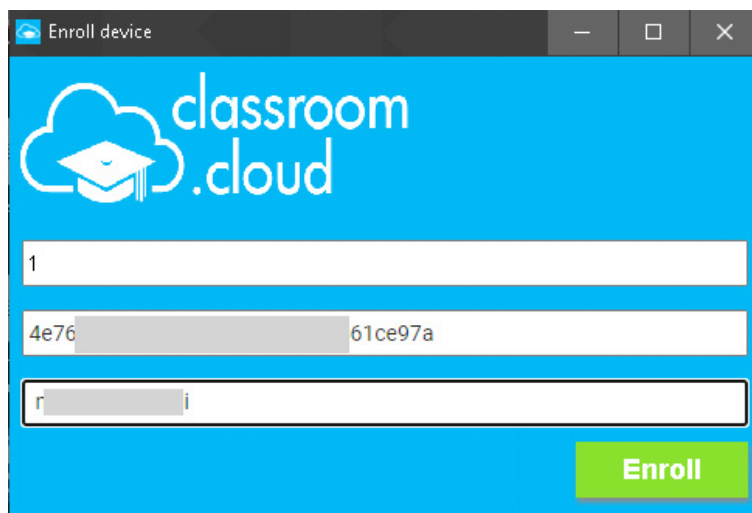
- Take a copy of the information from the screen or, for convenience, you can create a file containing the information. Click **Download** to create a **TXT file** (The filename will contain the name of each site to aid identification.) or you can **Copy** the information to the clipboard and paste it into Notepad (or similar). The text string created will appear in the following format:

```
{"options":{"Value":{"siteID":"1","accountID":"2890eft7fca627","region":"n:i"}}
```

- If applicable, repeat the process for each of your other sites. You will see that the only difference in the configuration information is the **Site ID**.
- You are now ready to install the Student extension on to the Chromebooks and when prompted, enter the three pieces of configuration information.

## Downloading the **classroom.cloud** Student extension

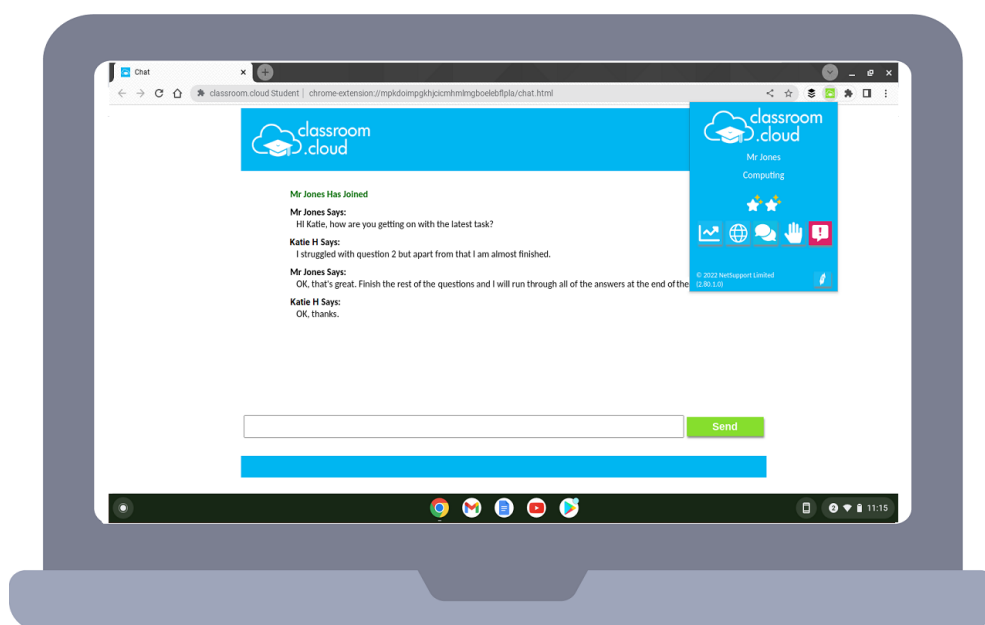
- Sign in to a Chromebook and login to the **Chrome Web Store**. (It is the Google credentials used that **classroom.cloud** uses to identify each device/student.)
- Search in **Extensions** for **classroom.cloud Student**.
- Click **Add to Chrome**.
- Click **Add Extension** to confirm.
- When you launch the extension, you will be prompted for the three pieces of **Site Configuration** information.



- Copy the information from the file you created earlier into the dialog and click **Enroll**.
- The device, along with the user credentials, will be enrolled in to the **classroom.cloud** web portal and listed within the specified site. The devices will initially be allocated to the **Unassigned Devices** group for the site.
- The Admin should now move them from here to the appropriate **Device Group**.

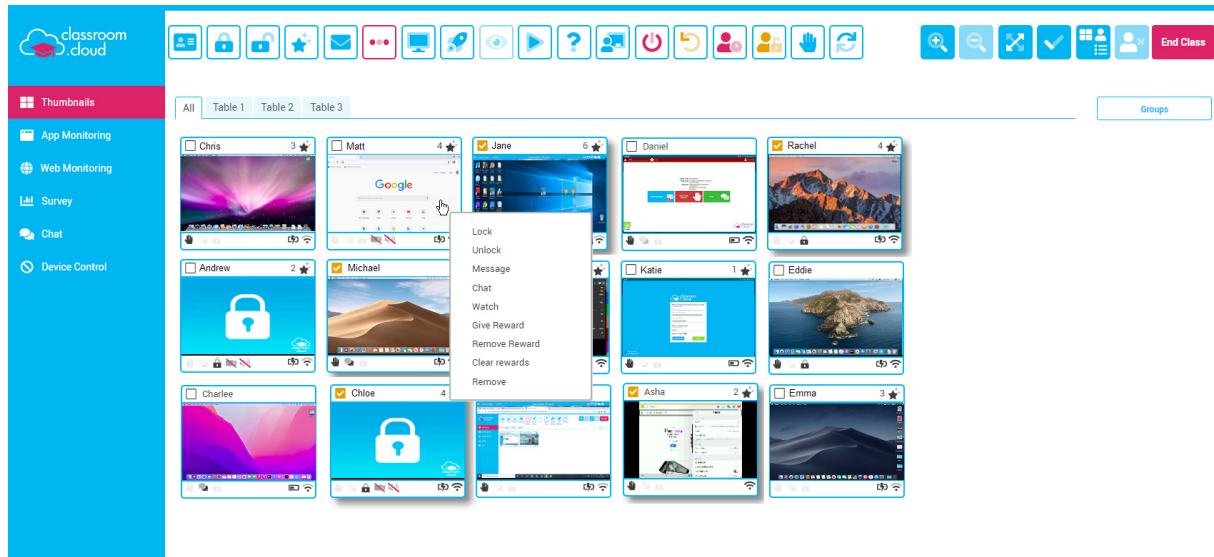
Next time the student credentials are used to sign in to one of your Chromebooks, it will be available for the teacher to connect to when they launch a class containing devices in the allocated **Device Group**.

The **classroom.cloud** Student extension icon displayed in the Chrome browser bar will indicate the current connection status - **Grey** if the Student extension is not currently connected to **classroom.cloud**; **Orange** if the device is not on the network or it is outside of school hours; **Blue** if the Student is available but not yet connected to a class, **Green** when a class is running and a connection to the device has been made from the **Teacher Console**.



Once the device is connected to a class, the student can click on the extension icon to reveal a 'student information bar'. This enables the teacher to communicate details of the lesson - objectives and expected outcomes, current state of any internet restrictions and recognise examples of good work by giving the student a reward - and gives the student the option to initiate a one to one chat session with the teacher and request help.

The **classroom.cloud Teacher Console** offers a wealth of features to aid instruction in a Chrome (and other platforms) environment. Classroom Management tools such as Chat, Message, Lock Screen, Help Requests, and Student Surveys combine with App/Web Monitoring and Restrictions and the ability to Quick Launch lesson resources to ensure teachers are always in control of classroom activity!



Our [Teacher Getting Started Guide](#) provides more information about the tools available.

We do hope this document has helped you get up and running with **classroom.cloud** in your Chrome classrooms.

But if you do require any additional help, our [Support team](#) will be happy to assist.

Thank you!  
The **classroom.cloud** Team (and friend!)

